

# STREAM DP

The ultimate GPR array solution with EsT technology for the highest depth performance in 3D utility mapping.

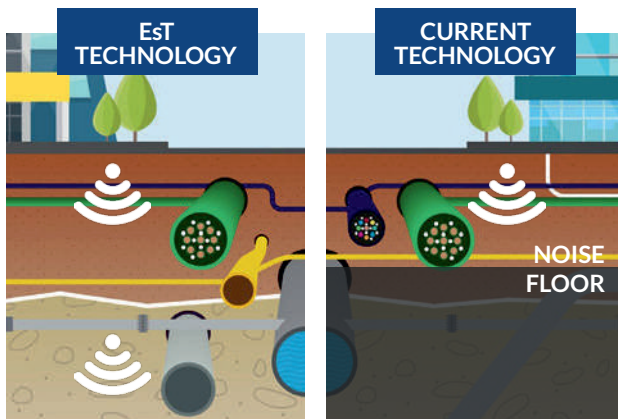


Maximum depth, high resolution and versatile design for superior productivity in underground surveys.

# Stream DP

3D utility mapping with the deepest performance.

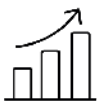
Stream DP is the revolutionary multichannel GPR array solution for utility mapping and underground asset detection that overturns the state-of-the-art for underground surveys. Featuring the new radical Equalized scrambled Technology - EsT by IDS GeoRadar, Stream DP brings underground assets detection to the next level: the deepest one.



## EsT | Equalized scrambled Technology: a new depth in utility detection.

Thanks to EsT, Stream DP is able to offer unparalleled GPR performance maximizing asset detection to a deeper range compared to any other solution available on the market.

This technology is able to exploit the entire radiating performance of the antenna for full control of the GPR signal, performing the best noise rejection and capturing both the lower and higher frequencies for an extended depth range and an ultra-high resolution.



### HIGH PRODUCTIVITY WITH NON-STOP PERFORMANCE

Stream DP boasts a massive array ( 30 channels in double polarization, 19VV + 11HH ) for an accurate 3D reconstruction of the underground utility network created in a single scan.

Stream DP meets the challenge of non-stop surveying performance with low battery power consumption and hot swap technology for the power supply.



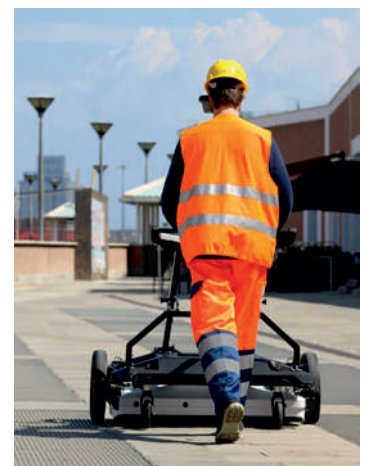
### DESIGNED FOR VERSATILITY: USER-CONFIGURABLE

Stream DP performs in all scenarios with its user-configurable hardware: from asphalt to rugged terrain configuration and vice versa. Ergonomically designed for easy handling and transportation, Stream DP can be efficiently deployed by a single user thanks to its light weight (max. 20kg per part) and its compact size that fits in a standard vehicle.



### GREATER EFFICIENCY FOR SATISFACTION AND COST-SAVINGS

With Stream DP, surveys are facilitated and successfully managed by one operator as the system can be effortlessly deployed, assembled and disassembled. Time and costs for safe data collection are significantly reduced as traditional downtimes and limitations are removed by Stream DP's versatility and improved efficiency in surveying.



One solution for different scenarios: Stream DP is user-configurable in rugged (left) and asphalt (right) version.

### SYSTEM SPECIFICATIONS

- 30 channels (19VV+11HH)
- Positioning: Integrated Encoder and PPS; external GPS and TPS
- Max. Acquisition Speed: 14 km/h (8.7 mph)
- Scan width: 83 cm
- System size: 116X82 cm
- Total weight: 42 kg (92.6 lb)
- Environmental: IP65

### NON-STOP PERFORMANCE

- Low battery power consumption (15-19W)
- Hot swap technology for power supply

### GREATER EFFICIENCY

- Single operator assembly/disassembly
- Superior maneuverability
- Compact and light-weight design

### MULTI-ENVIRONMENT CONFIGURATION

- Asphalt -> pivoting wheels
- Rugged -> terrain wheels

### EST TECHNOLOGY

- Extended depth range and high resolution
- Unparalleled control of the GPR signal
- Patented technology



A.



B.

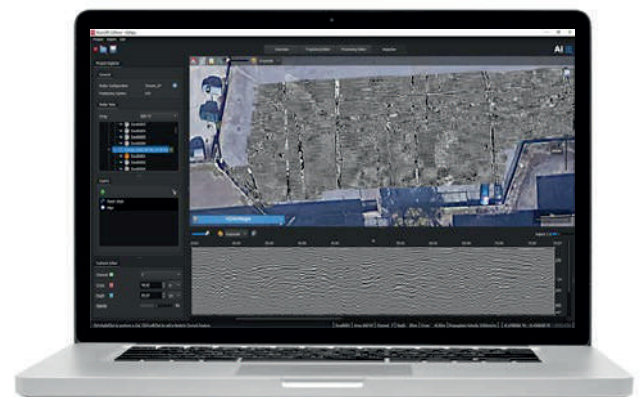
Designed to perform in different environments:  
 A. Rugged configuration with terrain wheels (grass, uneven ground, etc.)  
 B. Asphalt configuration with pivoting wheels for urban environments.

## No-limit to data collection and easy management.

Stream DP employs the latest software technology solutions for data collection and post processing: **uMap** and **IQMaps**.

The on-field software **uMap**, allows for faster collection and improved management of data with an easy-to-use interface that even unskilled users can comfortably manage.

**IQMaps** is IDS GeoRadar's post-processing software application for the advanced analysis of GPR data, enabling fast interfacing between the user and GPR data itself.



Stream DP	
TECHNICAL SPECIFICATIONS	
Sensor Frequency	600MHz
Weight	42Kg
Stream DP System Size	116X82 cm
Scan Width	82.5cm
Number of channels	30 (19VV-11HH)
VV channels spacing	4.3cm
HH channels spacing	7.5cm
Power Consumption	Acquisition:19W; Stand-by:15W
Max Operating Time	8H (can be extended by hot swap capability)
Environmental	IP65
Max Acquisition Speed	14km/h (8.7 mph)
Positioning	Integrated Encoder and PPS; external GPS and TPS
Certification	EC FCC IC
Recommended Laptop	Panasonic FZ-G2
Temperature range	-20°C – 50°C
Scan Step Resolution	4 cm
SOFTWARE SPECIFICATIONS	
<b>uMap</b> Acquisition Software	Automatic calibration for an easy and quick start-up Visualization and storage of antenna array data set (30 channels) Visualization of radar tomography (time slices) Connection with NMEA positioning device Multilanguage support Metric and Imperial units
<b>IQMaps</b> Processing Software	Advanced 3D processing software with a direct export link to AutoCAD

### IDS GeoRadar: The leader in multi-frequency and multi-channel Ground Penetrating Radar

IDS GeoRadar, a Hexagon company, provides products and solutions, based on radar technology, for mining, civil engineering and monitoring applications.

The company is a leading provider of Ground Penetrating Radar (GPR) and Interferometric Radar solutions worldwide.

IDS GeoRadar is committed to delivering best-in-class performance solutions and to the pursuit of product excellence, through the creation of application-specific, innovative and cost-efficient systems for a wide range of applications including mining, utility detection and mapping, civil engineering, geology, archaeology and public safety.

Hexagon is a global leader in digital reality solutions, combining sensor, software and autonomous technologies. We are putting data to work to boost efficiency, productivity, quality and safety across industrial, manufacturing, infrastructure, public sector, and mobility applications.

Our technologies are shaping production and people-related ecosystems to become increasingly connected and autonomous – ensuring a scalable, sustainable future.

Hexagon's Geosystems division provides a comprehensive portfolio of digital solutions that capture, measure, and visualise the physical world and enable data-driven transformation across industry ecosystems.

Hexagon (Nasdaq Stockholm: HEXA B) has approximately 22,000 employees in 50 countries and net sales of approximately 4.3bn EUR. Learn more at [hexagon.com](http://hexagon.com) and follow us @HexagonAB.

IDS GeoRadar Srl  
Via Augusto Righi 6, 6A, 8  
56121 Ospedaletto, Pisa, Italy  
Tel. +39 050 098 9300  
[info@idsgeoradar.com](mailto:info@idsgeoradar.com)

[www.idsgeoradar.com](http://www.idsgeoradar.com)

